

# Year 8 Art Day of the Dead

## A. Keywords:

- Formal elements** Line, Tone, Colour, Pattern, Shape, Texture and Form.
- Line** Horizontal, diagonal, curved, thick, thin, wavy,
- Shape** A shape is an area enclosed by a line.
- Tone** The lightness or darkness of something.
- Title Page** A well designed page all about the them, with images and information.
- Papel Picado** Traditional Paper cut form of art, used to decorate homes, business, markets and altars in preparation for the festival.
- Relief** In Sculpture relief refers to images that are slightly raised from a flat background.
- Sugar Skull** Highly decorated sweet biscuits
- Symbolism** Symbols connected to Death are frequently part of the festival, flowers, candles, graves, etc..used

## B. Key Knowledge : Day of the Dead (context)

**Day of the Dead:** A festival celebrating those no longer with us, originating in Mexico. The Day of the Dead is a celebratory time when communities come together.



## E. Images



## F. EXPERT MODELLING:



Half and Half drawing



Papel Picado



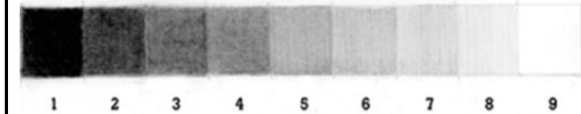
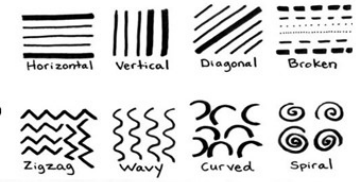
Skull design

**Subject: Art**  
**Topic: Year 8 Day of the Dead**

## C. Key Knowledge 2: Tonal Range & types of Line

Generate a range of line types and thicknesses to create the most effective results. Aim for variety. When creating your tattoo design, stick to 3 tones (white, mid and black)

### Types of Lines



## D. Key Knowledge 3: Clay relief

Developing your painting skills to be the best they can be is key to this project. Master painting on a 2D surface before attempting to paint your design onto your hand. Use the correct size brush for the job.



## G. Wider thinking / further reading:

<https://www.youtube.com/watch?v=V-5-1ffAe9w>