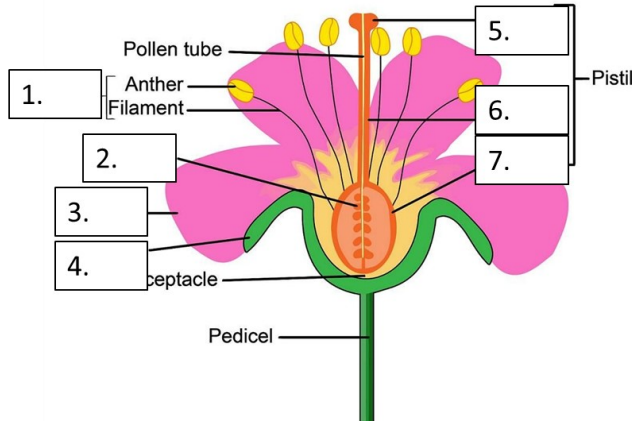


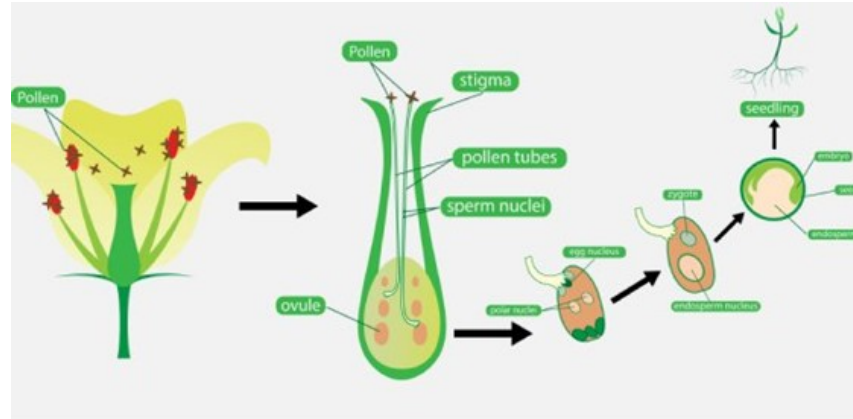
Year 7 Plant Reproduction Knowledge Organiser



1. Plant reproductive organs

N o.	Key-word	Meaning
	Pollen	The plant equivalent of sperm
1.	Stamen	Male reproductive organ. Contains the pollen on the anther
2.	Ovule	The plant equivalent of the egg cell
3.	Petal	Brightly coloured parts which draw attention to the stamen and stigma
4.	Sepal	Protective layer covering the flower while it develops
5.	Stigma	When the pollen grain lands to fertilise the ovule
6.	Style	Connects the stigma to the ovary
7.	Ovary	Where the ovules are stored. Where the seed grows

2. Pollination



Stage	
1	Pollen from anther deposited on stigma
2	Tube from pollen grows down to ovary
3	DNA from pollen transfers to ovule

3. Seed dispersal

